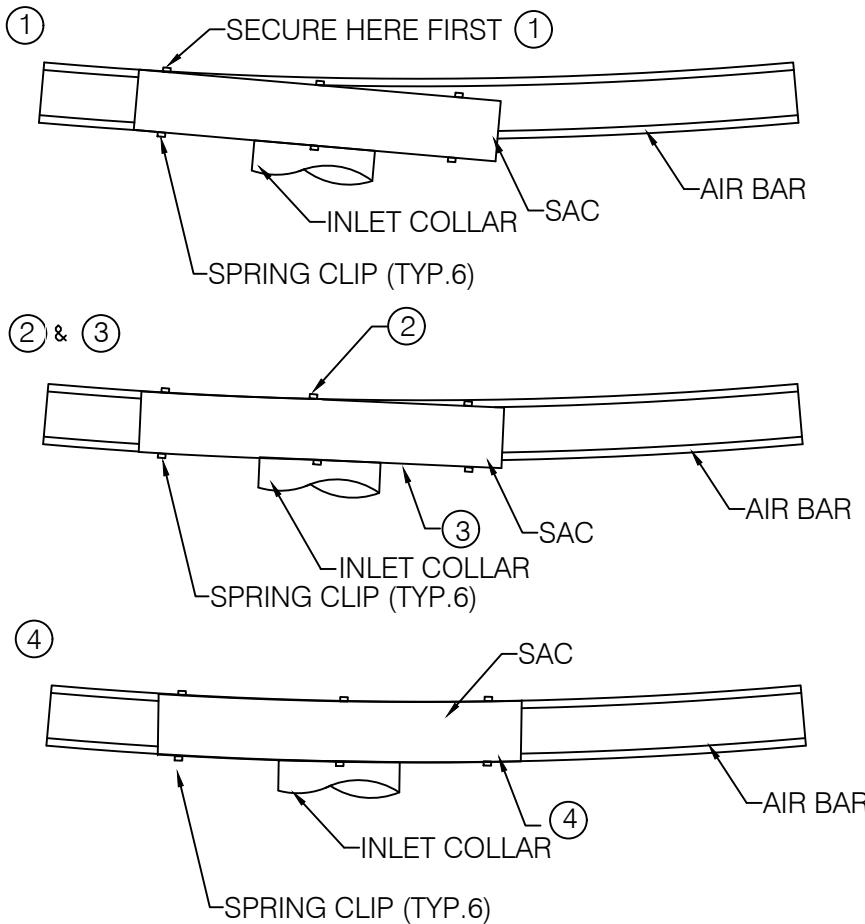




# AIR FACTORS

4771 ARROYO VISTA, SUITE D  
LIVERMORE, CA 94551

PH. # 925-579-0040  
FAX # 925-579-0044



Sequence of installation to install a straight Supply Air Chamber to a curved Linear Air Bar.

- ① Start with one end of SAC and secure the first two Spring Clips.
- ② Push back the back side of the SAC so that it aligns with the Air Bar (through the inlet collar) and secure the back spring clip in the center.
- ③ Push the front side of the SAC so that it aligns with the Air Bar and secure the front center spring clip.
- ④ Push the other end of the SAC and secure the final two spring clips.

PROJECT:

TITLE:

SUPPLY AIR CHAMBER on CURVE

DATE:

DRAWN:

Sophie Duquay

SCALE:

NTS

DWG. #:

9-E6-A